



Photo courtesy of Tourism Australia

## Bachelor of Tourism & Hospitality Management

### Course Name

Bachelor of Tourism and Hospitality Management  
(This qualification is recognised in the Australian Qualifications Framework)

### Course CRICOS Code

073530C

### CRICOS Provider Number

02439G

### Study Location

Melbourne  
Level 7, 628 Bourke St,  
Melbourne VIC 3000, Australia  
Sydney  
Level 6 & 7, 333 Kent Street,  
Sydney, NSW 2000, Australia

### Contact Hours (per week)

Full-time: 15 hours

### Duration

3 years (6 semesters)

### Study Requirements

24 Total units  
16 core units & 8 electives

### Tuition Fees ^

**(Domestic & International):**

^ Subject to fee change annually

2017 Course Fees

AUD \$45,000 (3 years program)

**Material Fee** \$100 per semester (6 semesters)

**Administration Fee** AUD\$200

**Building Swipe Card** (Refundable)

AUD\$100

### 2017 Intake Dates:

20 Mar, 17 Jul, 13 Nov

### Course Outline

The Bachelor of Tourism and Hospitality Management (BTHM) offer an effective starting point for a career in tourism and hospitality. The program is designed with an emphasis on case-based learning that builds progressively through the three year degree. A feature of this BTHM program is the arrangement of practitioners as visiting lecturers who will share their knowledge and experience, and field trips to enable you to gain first-hand experience of the contemporary context of the tourism and hospitality sectors. These real-life case studies will support your learning and ensure you have a wide choice of work options and an increased potential for long-term career development and leadership roles in this dynamic growth industry.

To give you an added advantage in your career, the BTHM program has been developed with close industry consultation. Subjects such as Strategic Management in Tourism and Hospitality, Cost and Performance Management and Global Tourism and Hospitality Futures will develop your strategic insight and international perspective, while Digital Marketing and Innovation and Entrepreneurship in Tourism and Hospitality equip you with skills and knowledge to engage in the changing virtual landscape and apply your learning to the challenges of the global business world. Practice-based subjects such as Work Integrated Learning and Work Integrated Project provide a practical orientation towards your study and prepare you for your chosen career.

### Course Requirements

This degree comprises 24 subjects that include 16 core and 8 electives, covering a range of tourism, hospitality and work-integrated learning subjects.

First Year Subjects	
Code	Core Units
THB1104	Introduction to Tourism and Hosp
MGL1112	The Business & Legal Environment
MGE1108	Economics for Business
MGK1103	Principles of Marketing
Code	Elective Units
AFA1105	Accounting for Management
MGM1101	Introduction to Management & Human Resources
MGC1111	Communication & Study Skills
THH1107	Food & Beverage Management
THT1113	Tourism & Hosp Information Systems

Second Year Subjects	
Code	Core Units
MGM2111	Understanding & Managing Diversity
THT2107	Work Integrated Learning
THH2113	Hosp & Tourism Services Management
THT2114	Sustainable Operations & Destinations
THT2112	Digital Marketing in Tourism & Hosp
Code	Elective Units
THT2106	Festival & Event Management
THT2105	Tourism and Transport
THH2101	Accommodation Management
THH2108	Managing Commercial Food Production

Third Year Subjects	
Code	Core Units
MGM3107	Strategic Management in T&H
MGM3115	Innovation & Entrepreneurship in T&H
THB3116	Work-integrated Project
THT3111	Environment & Cultural Tourism
THT3112	Global Tourism & Hosp Futures
THT3114	Tourism Research & Analysis
THT3119	Event and Project Management
Code	Elective Units
THH3102	Resort Development & Management
THH3113	Cost & Performance Mgmt for T&H

**Note: Fees and Units may subject to change without notice**

## Student Support

Comprehensive student services will be available to enrolled students at AAPoly, including welfare and academic counselling and online learning resources. For further information contact the Student Services Department.

## Recognition of Prior Learning or Advanced Standing

Prospective students who have completed post-secondary studies either in Australia or overseas are eligible to apply for recognition of prior learning or advanced standing. For more details, please refer to AAPoly's credit application procedure or contact Student Services. All credit applications must be submitted prior to enrolment. If credits are granted, the overall study duration of the course will be adjusted accordingly.

## Application Method

Submit an application form to:  
**Academies Australasia Polytechnic Melbourne**  
 Level 7, 628 Bourke St,  
 Melbourne, VIC 3000, Australia  
**Sydney**  
 Level 6 & 7, 333 Kent Street  
 Sydney, NSW 2000, Australia  
 Form may be downloaded from  
<http://www.aapoly.edu.au>

\* Students are advised to check for any amendments prior to enrolment.

## Course Enquiries

**Academies Australasia Polytechnic Melbourne**  
 Level 7, 628 Bourke St,  
 Melbourne, VIC 3000, Australia.  
 Phone: +613 8610 4100  
 Email: [enquiries@aapoly.edu.au](mailto:enquiries@aapoly.edu.au)  
**Sydney**  
 Level 6 & 7, 333 Kent Street  
 Sydney, NSW 2000, Australia  
 Phone: +612 9224 5500  
 Email: [info@academies.edu.au](mailto:info@academies.edu.au)

## Career Opportunities

The Bachelor of Tourism and Hospitality Management prepares you for an entry level management position in either a tourism or hospitality organization. You will also gain sufficient knowledge and practice to enter into the small business sector.



### Entry Requirements

- A minimum of 18 years of age

### International Students

- English level at TOEFL 550 or IELTS 6.0 (Academic) with no individual band less than IELTS 5.5 or Pearson Test of English PTE: (Overall score 50-57) No section score less than 42.
- Completion of Australian Year 12 (or equivalent)

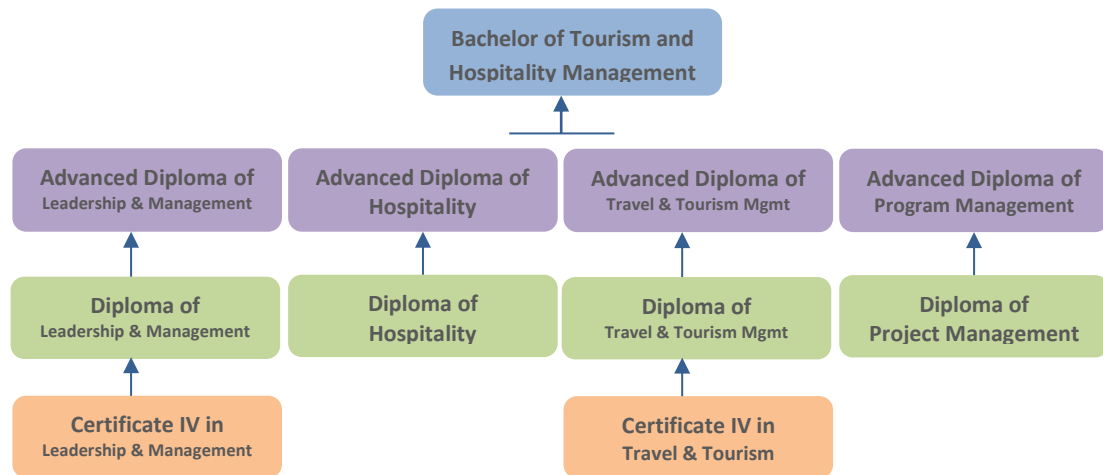
### Domestic Students

- Completion of Australian Year 12 or equivalent

### Mature Age Students

A mature age student is considered to be a person who has left the post-secondary school education for ten years and does not possess an Australian Year 12 or equivalent qualification. To allow these students to gain access to a higher degree, AAPoly will consider completion of minimum Australian Year 10 or equivalent qualification with relevant work experience. All such cases will be assessed on a case-to-case basis by AAPoly Academic Dean or Faculty Head for Higher Education.

### Pathway



### Nationally Accredited Qualification in Australia



### University Pathways



IN ASSOCIATION WITH



A FEDERATION UNIVERSITY PARTNER PROVIDER INSTITUTION

AAPoly – A FedUni Partner Provider Institution in Melbourne  
 FedUni CRICOS Provider Number 00103D